



Plants  
Agroscope technical sheets | N°9 / 2016  
Varietal sheet | Oat

# Hative des Alpes

*Avena sativa* L. var. *mutica*

Country of origin: Switzerland

## Passport

**Variety name:** Hative des Alpes  
**Variety status:** Traditional cultivar  
**Region:**  
**Accession number:** AV0004  
**Accession name:** Hative des Alpes  
**Acquisition date:** 2012  
**Donor name:** Vavilov Institute  
**Donor number:** 5028  
**Remarks:** Swiss local accession collected in 1926 and stored until 2012 in Vavilov Institute



## Physiologic characterization

*Evaluation:* Agroscope Charline Daujat 2015  
Prangins CH: Rives (380m) 462339N/0061456E

**Type:** Spring  
**Precocity:** 139  
**Lodging:** Strong  
**Height:** 135cm  
**TKW:** 20.73

## Technologic values

*Analyzes:* Agroscope Charline Daujat/Charlotte Martin 2016  
Prangins CH: Rives (380m) 462339N/0061456E

**Protein content:** 12.86%  
**Test weight (kg/hl):** 55.98  
**Grain length/width (mm):** 10.53/2.47  
**Percentage of husk:** 38.63%  
**βglucan content:** 6.74%  
**Mycotoxin content:**

## Diseases sensitivity

*Notations:*

**Puccinia coronata:**  
**Puccinia graminis:**

## Particular remarks

Regular spikelet number between panicles



## Morphologic characterization<sup>1</sup>

Description: Agroscope Charline Daujat 2015

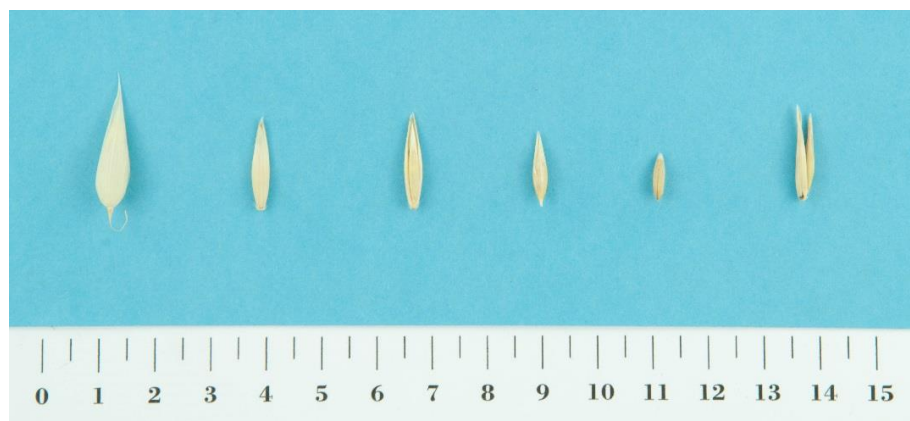
Prangins CH: Rives (380m) 462339N/0061456E

### Vegetative

Code	Descriptors	Comments	0	1	2	3	4	5	6	7	8	9
4.1.6.	Stem thickness	relative to reference varieties <sup>2</sup>				X						
4.1.7.	Nodes hairiness									X		
4.1.8.	Angle of flag leaf to culm				X							
4.1.9.	Rigidity of flag leaf							X				
4.1.10.	Angle to culm of leaves	other than flag leaf					X					
4.1.11.	Rigidity of leaves	other than flag leaf						X				
4.1.12.	Hairiness of leaf sheath	lower leaves						X				
4.1.13.	Hairiness of leaf margin	leaf below flag leaf						X				
6.1.1.	Length of second leaf from top	relative to reference varieties <sup>2</sup>										X
6.1.2.	Width of second leaf from top	at widest point and relative to reference varieties <sup>2</sup>						X				
6.1.3.	Number of tillers	relative to reference varieties <sup>2</sup>				X						
6.1.4.	Number of fertile tillers	relative to reference varieties <sup>2</sup>					X					
6.1.5.	Lodging at immature stage									X		
6.1.6.	Lodging at mature stage					X						

### Inflorescence, fruit and grain

Code	Descriptors	Comments	0	1	2	3	4	5	6	7	8	9
4.2.3.	Angle of panicle branches to main axis						X					
4.2.4.	Erectness of spikelets							X				
6.2.3.	Maturity and Straw	Relation between maturity of grain and straw						X				
4.3.2.	Hairiness of lemma									X		
4.3.8.	Hairiness at basal part of the primary grain					X						
6.3.1.	Grain shedding at maturity	cultivated forms				X						
4.3.4.	Awedness	recorded on basal floret	X									



Spikelet color<sup>3</sup>



Leaf color<sup>3</sup>



Straw color<sup>3</sup>

Shape of panicle: Equilateral

Waxiness of the panicle: Yes

Number of seeds in panicle: 110

Number of grains in spikelet: 2

Kernel covering: Yes

Lemma color: White

Awn type: /

Position of awn insertion: /

#### Impressum

Editor: Agroscope  
Route de Duillier 50  
1260 Nyon 1  
www.agroscope.ch

Copyright: © Agroscope 2016

<sup>1</sup> Descriptors from IBPGR document "Oat descriptors", Rome 1985.

<sup>2</sup> Reference varieties: Expander, Ebène and Triton.

<sup>3</sup> Scale from "Kriterien der Getreidearten einschließlich Mais und ihre Bewertung zur Sortenidentifizierung", Dr. R. Milatz, 1970.